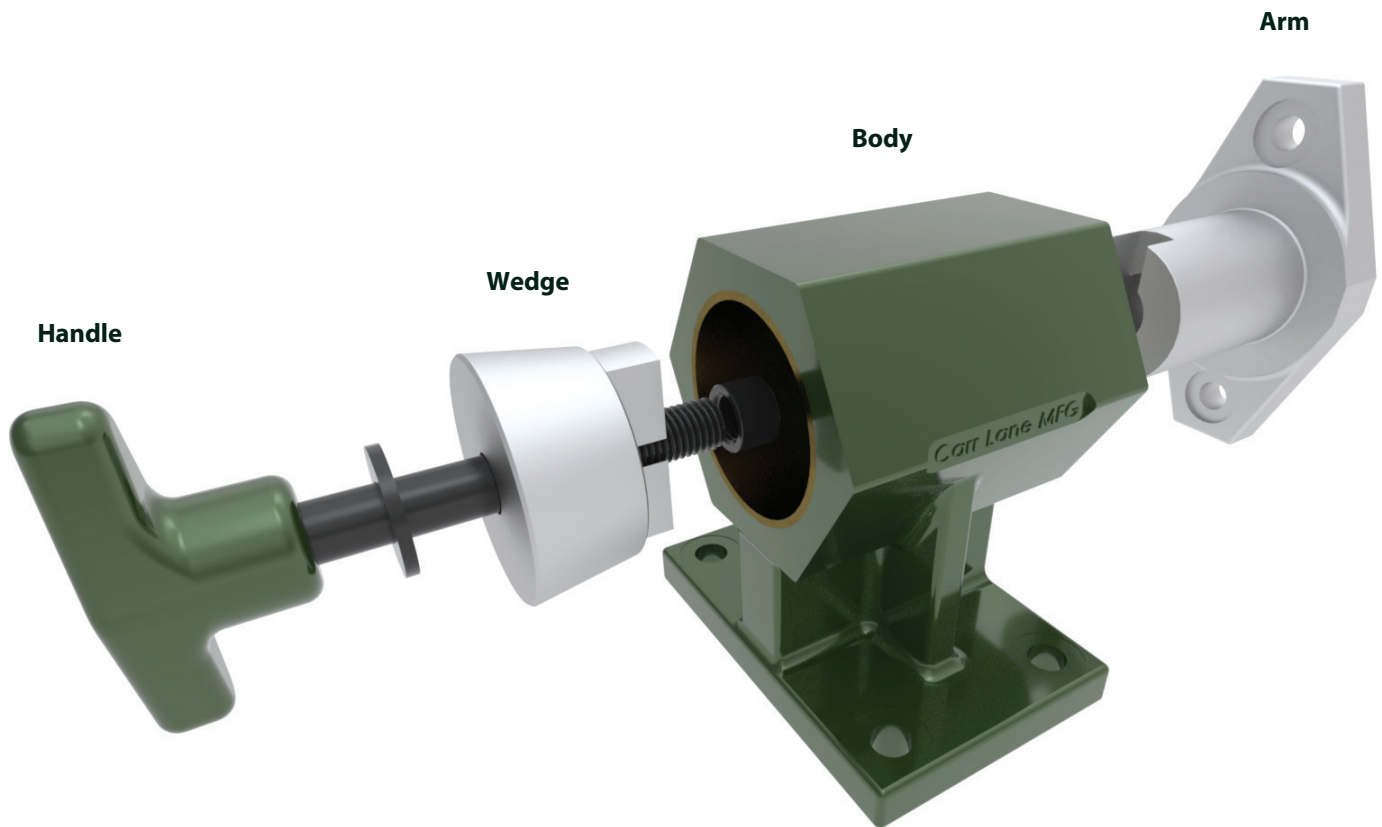
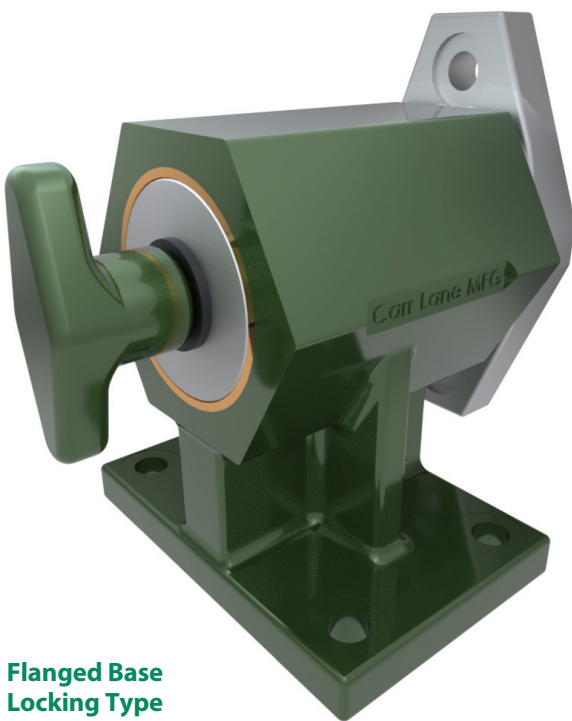


Trunnions are rugged, precision bearing mounts for revolving fixtures. Ideal for assembly and welding fixtures, and any other application where the part must be accessible from all sides.

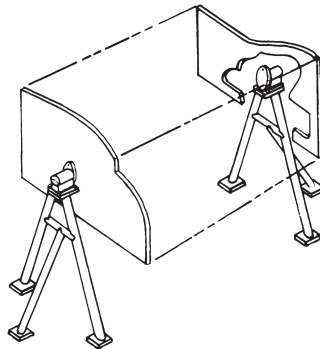


Trunnions are rugged, precision bearing mounts for revolving fixtures. Ideal for assembly and welding fixtures, and any other applications where the part must be accessible from all sides. Usually used in pairs, one locking Trunnion and one revolving Trunnion, to distribute the load between them without bending forces. The locking version, shown here, has a friction-cone mechanism that stops the rotor at any angle by tightening the knob handle (loosen knob again to unlock). The revolving version has a free-rotating bearing at both ends of the rotor shaft, with no locking mechanism. Choice of two sizes. Made in USA.

Trunnions are usually used in pairs, one locking type and one revolving type, to distribute the load between them without bending forces.



Flanged Base Locking Type



Flanged Base Revolving Type

FLANGED BASE — LOCKING TYPE

PART NO.	LOAD CAPACITY (18" from face)	A	B	C	D	E	F	G	H	J	K	L	M
CL-100-TL	1800 lbs	2	4	2-3/8	1/2	1-7/8	2	4	4	2-5/8	3-1/4	7	3/8 or M10
CL-200-TL	2500 lbs	2-7/8	5-3/4	3-3/8	3/4	2-5/8	2-13/16	5-5/8	5-1/4	3-3/4	4-1/4	9	5/8 or M16

FLANGED BASE — REVOLVING TYPE

PART NO.	LOAD CAPACITY (18" from face)	A	B	C	D	E	F	G	H	J	K	L	M
CL-100-TR	1800 lbs	2	4	2-3/8	1/2	1-7/8	2	4	4	2-5/8	3-1/4	7	3/8 or M10
CL-200-TR	2500 lbs	2-7/8	5-3/4	3-3/8	3/4	2-5/8	2-13/16	5-5/8	5-1/4	3-3/4	4-1/4	9	5/8 or M16